



**Nutrien**<sup>™</sup>  
*Feeding the Future*<sup>™</sup>

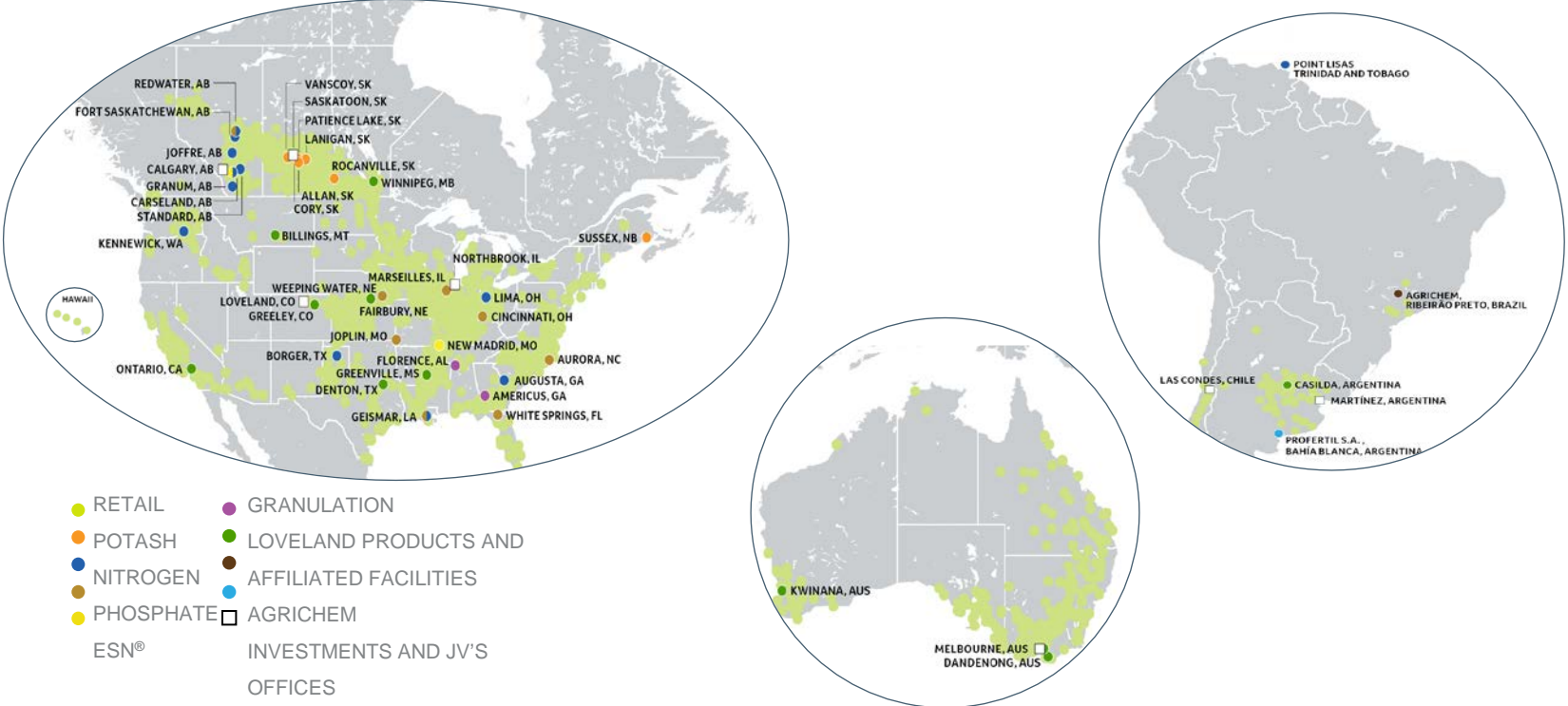
# Nutrien: World's largest integrated agriculture company

- ~27Mmt Combined tonnes of potash, nitrogen, phosphate + sulfate
- >2,500 Retail locations in 7 countries
- 11 Formulation plants in 5 countries
- 12 Innovation/R+D centers in 4 countries
- 11 Global seed breeding assets
- 27 Production facilities
- >1,800 North American distribution points
- >3,400 Agronomists and crop consultants
- ~25Mmt Nutrient sales<sup>1</sup>
- >500,000 Customers served around the globe
- >25,000 Employees

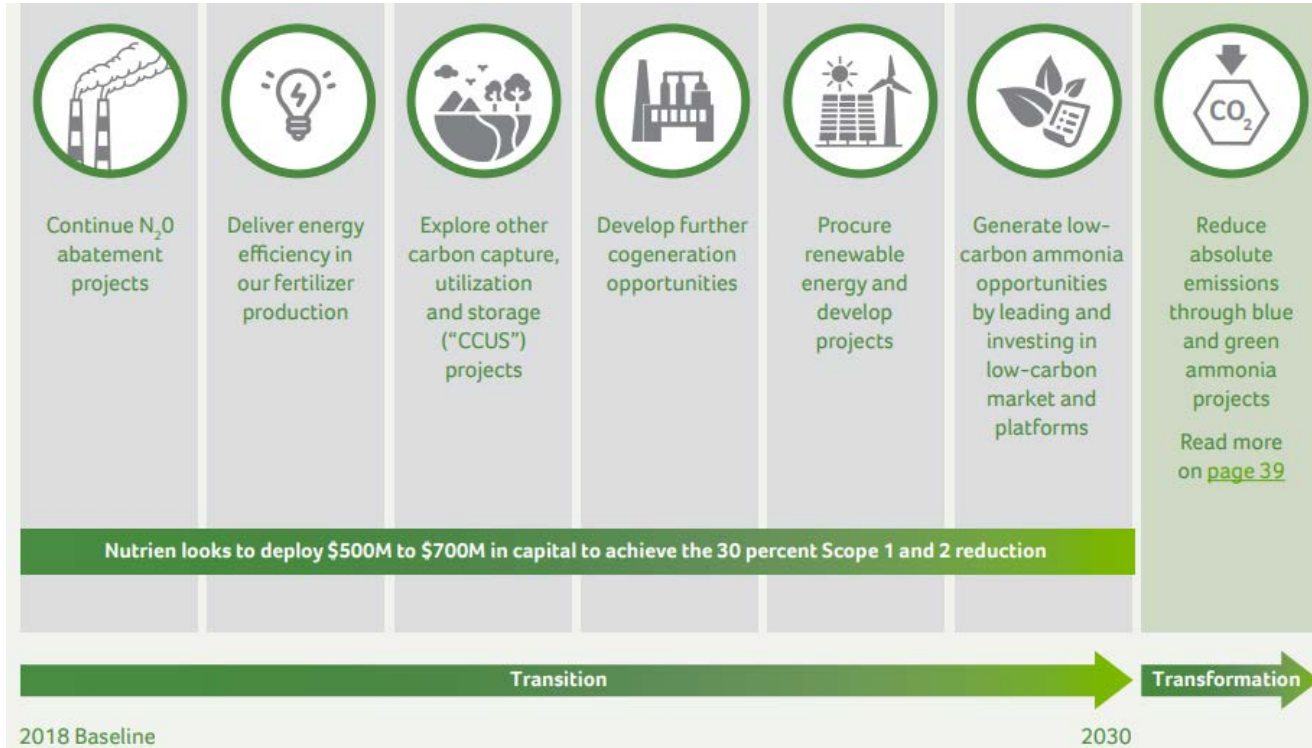
<sup>1</sup> 2019 manufactured product sales tonnes

## Nutrien operates **four** interrelated business units:

- **Retail**
  - World's largest direct-to-grower provider of products, services + solutions, with annual sales of >\$13B
- **Potash**
  - Largest potash producer with nearly 12Mmt<sup>1</sup> annual product sales
- **Nitrogen**
  - Third largest global nitrogen producer with close to 10Mmt<sup>1</sup> of nitrogen product sales annually
- **Phosphate + Sulfate**
  - Second-largest North American phosphate producer with nearly 3Mmt<sup>1</sup> of phosphate finished product sold annually



# Reduce Scope 1 & 2 emission intensity 30% by 2030



Reduce an incremental 1 Mmt CO<sub>2</sub>e by 2023 from N<sub>2</sub>O abatement tech

Deploy **new ammonia production tech** and expand CCUS to capture or reduce 90% of ammonia production emissions (Geismar LA)

Partnered with Exmar to build **low carbon ammonia fueled marine vessel** to decarbonize shipping

US DOE partnership to develop **flexible zero carbon NH<sub>3</sub> production facilities** – 1 mt/day for use in ag or as fuel

Commitment to set Science Based Targets and support development of a Sectoral Decarbonization Approach with SBTi

# Carbon Program for Farmers

- Quantify GHG emission reduction from agricultural management practices
- Prepare growers to participate in carbon market opportunities
- Develop a scalable process enabled with digital data tools

